



'Watertight by Design'



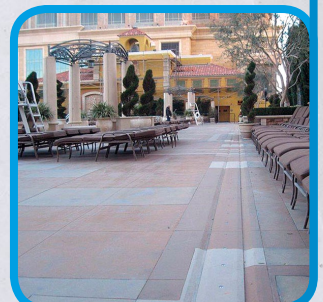
Mets Citi Field Stadium Queens, New York

Case Study

The pool deck at any Casino Hotel is always one of the key property attractions, but having a wide movement joint running right through it posed functional and aesthetic challenges. The original design involved a cover plate that was invasively anchored on one side over a looped membrane acting as a gutter to take water away. As always this type of system leaked, it had always leaked, causing damage to finishing's and allowing penetration into the structure.

The EMSEAL's SJS System provided the ideal solution, featuring non-invasive anchoring, installation from the deck surface above - without the need to disrupt the occupied floors below, elimination of any gutters, plus a recessed integral cover plate, with the creative pool deck coating system also able to be taken beneath and over the cover plates for optimum aesthetics.

As part of the solution the existing invasive anchors were removed as they presented a long term risk having already begun to corrode in several areas, the joint edges were saw-cut straight and the arrises reformed as required; then the EMSEAL SJS System was simply installed from above.



Client:

The Venetian Hotel, Las Vegas,
Nevada, USA

Specialist Contractor:

Expansion Specialities Inc.,
Henderson, NV

Main Products Used:

EMSEAL SJS

For More Information:

NCC Movement Joints Ltd

01257 266696

technical@nccinaction.co.uk

www.EmsealServices.co.uk

www.Emseal.com